

Dear Colleagues,

As decided in the last EWON meeting in Zagreb (October 20-21, 2006), the preparation of the 2nd deliverable entitled *A Mapping Study of Nuclear Science and Technology in the Southeast and the Northeast European Countries: Present and Future* will be based on ONE questionnaire to be distributed to all nuclear physics institutions of EWON countries. Responsible for the distribution of the questionnaire within a EWON country is the corresponding national EWON representative(s). These persons are also responsible for the collection of the filled questionnaires at a national level. These have to be sent to me the latest by March 31, 2007 as agreed in the Zagreb meeting. The filled questionnaires will be evaluated by the members of the three EWON working groups. It is necessary that a first presentation of these evaluations will be presented during the EWON Workshop to be held in Prague, during May 2007.

Today, you will receive the 1st draft of the questionnaire I have prepared following the guidelines set during the Zagreb meeting. I would like to ask all members of the WGs to check the questionnaire, suggest changes and send them to me the soonest possible. I would like to present the final questionnaire during the EURONS meeting at KVI on December 10-11, 2006. This version does not include a detailed part for WG:3 (“Education”), but only some general questions. Therefore, I would like to draw the attention of the members of this WG to this point and ask for their help in adding, if necessary, more questions relevant to their work.

Below you will find some general guidelines about the filling of the questionnaire. Please take into account that, in order to form the questionnaire I have assumed that an “INSTITUTION” can be

- Option 1:** Institute / Department of a University
- Option 2:** Institute / Department of a National Research Organization distributed in different sites
- Option 3:** Institute / Department of a National Research Center
- Option 4:** Independent laboratory of a University
- Option 5:** Independent laboratory of a National Research Organization distributed in different sites
- Option 6:** Independent laboratory of a National Research Center
- Option 7:** Other, to be specified

An “institution” may consist of more than one Research Infrastructures as shown in the figure below. In this scheme, various Research Groups perform research. Research Groups may be “mixed”, i.e. a scientist may “belong” to more than one group. In this case his activities have to be “fractioned” accordingly in the questionnaire.

In case of :

Options 1, 2 and 3:

The questionnaire should be filled by the “INSTITUTION” (Fields A1-A30, B1-B3), all “RESEARCH INFRASTRUCTURE” units belonging to the “Institution” (Fields C1-C30, for every infrastructure) and of course by the “RESEARCH GROUPS” of the Institution (Fields D1-D10, for every group).

Options 4, 5 and 6:

The questionnaire is now addressed to a “RESEARCH INFRASTRUCTURE” that is equivalent to an “INSTITUTION”. In this case, the fields to be filled are: A1-A26, B1-B3, C20-C21, C23-C24, and C26-30. In addition, every “RESEARCH GROUP” fills part D of the questionnaire.

Options 7:

You decide about the fields to be filled.

Have fun with the Questionnaire!

S. Harissopulos

November 28, 2006

p.s. Please, check your e-mail addresses given below as well as in the EWON website.

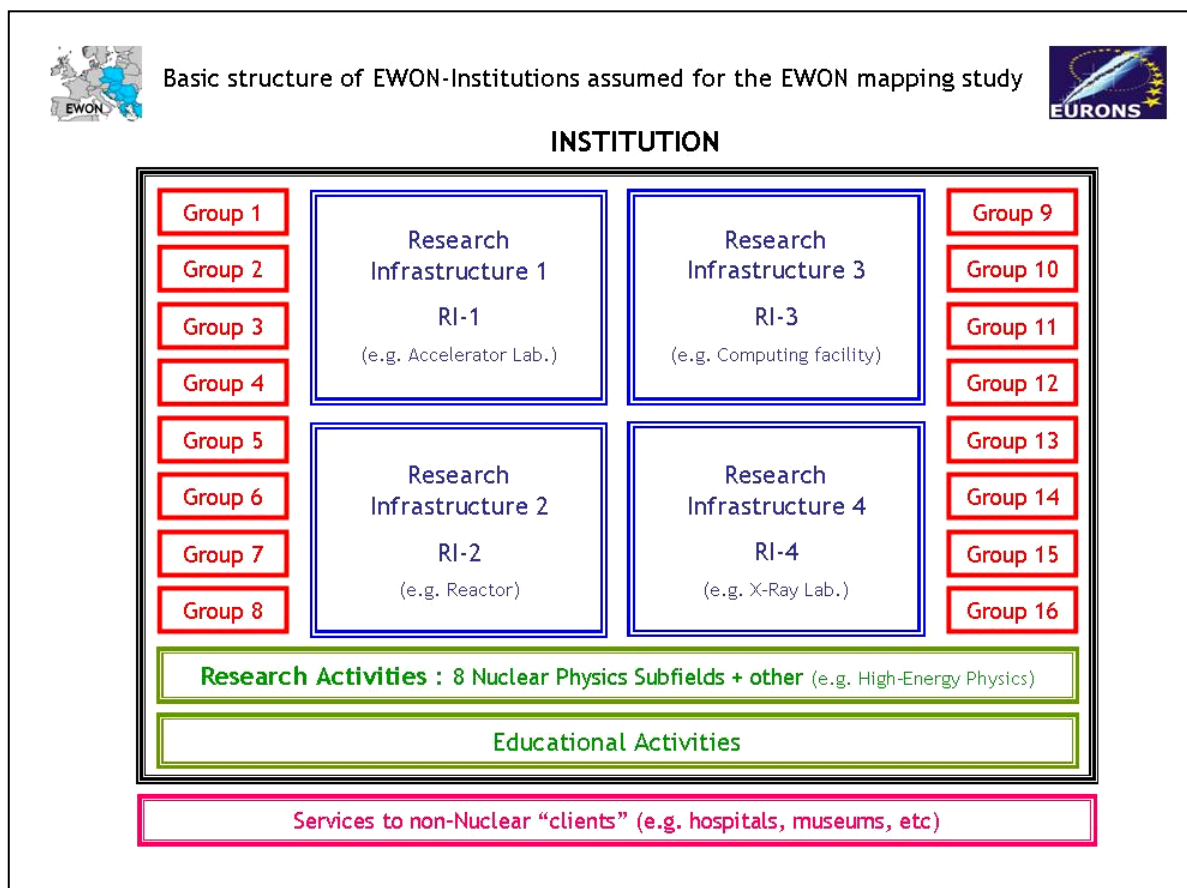


FIGURE 1: Basic structure assumed for an "INSTITUTION"

EWON Scientists responsible for the distribution and collection of the filled questionnaires at national level:

- Bulgaria: C. Stoyanov (stoyanov@inrne.bas.bg)
- Croatia: Z. Basrak (basrak@irb.hr)
- Czech Rep.: J. Dobes (dobes@ujf.cas.cz)
- Greece: S. Harissopulos (sharisop@inp.demokritos.gr)
- Hungary: A. Krasznahorkay (kraszna@atomki.hu)
- Poland: R. Broda (rafal.broda@ifj.edu.pl)
- Romania: N. V. Zamfir (zamfir@tandem.nipne.ro)
- Serbia: N. Neskovic (nnesko@vin.bg.ac.yu) and I. Bikit (bikit@im.ns.ac.yu)
- Slovakia: E. Betak (betak@savba.sk)
- Turkey: M. N. Erduran (erduran@istanbul.edu.tr)

Members of the EWON Working Groups:

	WG1: Physics	WG2: Infrastructures	WG3: Physics
	EWON Coordination S. Harissopoulos sharisop@inp.demokritos.gr	EWON Coordination D. Balabanski d.balabanski@gmail.com	EWON Coordination G. Cata-Danil cata@ifin.nipne.ro
NATIONAL COORDINATORS			
Bulgaria	C. Stoyanov stoyanov@inrne.bas.bg	H. Protohristov proto@inrne.bas.bg	B. Slavov slavov@phys.uni-sofia.bg
Croatia	Z. Basrak basrak@irb.hr	M. Jaksic jaksic@irb.hr	D. Vretenar vretenar@phy.hr
Czech Republic	A. Kugler kugler@ujf.cas.cz	J. Dobes dobes@ujf.cas.cz	J. Kvasil kvasil@mff.cuni.cz
Greece	P. Demetriou vivian@inp.demokritos.gr	R. Vlastou vlastou@central.ntua.gr	G. Lalazisis glalazis@auth.gr
Hungary	No scientist assigned yet	No scientist assigned yet	No scientist assigned yet
Poland	B. Fornal bogdan.fornal@ifj.edu.pl	J. Jastrzębski jastj@slcj.uw.edu.pl	T. Matulewicz Tomasz.Matulewicz@fuw.edu.pl
Romania	I. Ursu iursu@opensys.ro	D. Bucurescu bucurescu@tandem.nipne.ro	A. Jipa ajip@scut.fizica.unibuc.ro
Serbia	J. Comor jcomor@vin.bg.ac.yu	N. Neskovic nnesko@vin.bg.ac.yu	I. Bikit bikit@im.ns.ac.yu
Slovakia	J. Masarik masarik@fmph.uniba.sk	J. Kristiak fyzikrjo@savba.sk	P. Povinec povinec@fmph.uniba.sk
Turkey	S. Erturk sefa@nigde.edu.tr	N. M. Erduran erduran@istanbul.edu.tr	M. Bostan bostan@nucleus.istanbul.edu.tr